



Best Practice Network



Blueprint Alliance
PLAN FOR SUCCESS

Nationwide delivery

Flexibly delivered around you



Leadership NPQs

For teachers and leaders looking to become:

- Senior Leaders (NPQSL)
- Headteachers (NPQH)
- Executive Headteachers (NPQEL)
- SENCOs (NPQ for SENCOs)

“The leadership NPQs prepare current and aspiring school leaders for all of the challenges of senior leadership, headship, executive leadership and now SENCOs, too!”

Vanessa Macdonald,
Lead Facilitator for
Leadership NPQs.



Accredited NPQ provider



Department for Education

Learn. Share. Grow.

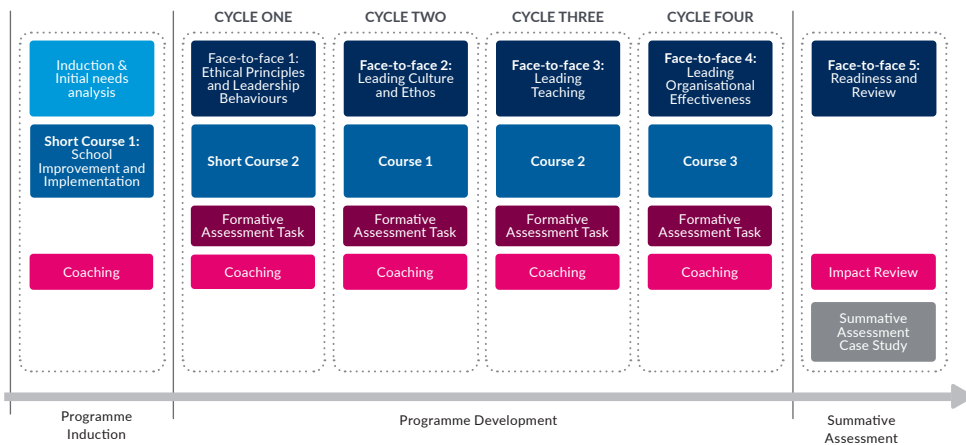
NPQs from Best Practice Network

The National Professional Qualifications (NPQs) are a suite of DfE-accredited qualifications for school leaders, designed to support professional development.

The four Leadership NPQs in this brochure are for teachers and leaders who want to become senior leaders (NPQSL), headteachers (NPQH), executive headteachers (NPQEL), or SENCOs (NPQ for SENCOs).

Best Practice Network's unique approach to NPQ delivery means participants access individualised training based on areas they have identified as needing improvement. Our cyclical programme structure utilises Face-to-Face training, online learning and 1:1 coaching to deliver a comprehensive learning experience that fits around busy teacher timetables.

NPQ Programme Structure



We offer NPQs with...



- Flexible training**
 The qualifications are designed to be flexible to fit with your busy working role. Training is delivered in bite-sized chunks, and you can learn at a time and pace that suits you.
 On average you will need to spend between 1 and 2 hours per week working towards completing this NPQ. Where possible, you should do this during dedicated career development time in school hours.
- Face-to-Face Events**
 Take advantage of training alongside a diverse group of fellow educators with lots of different perspectives. You will learn from each other's experiences and be able to bounce ideas off each other during group sessions and collaborative practical tasks.
- Individualised training**
 You will be able to focus on specific areas of leadership where you want to improve your knowledge. This will help you make evidence-informed decisions and action positive change.
- Coaching**
 You will benefit from personalised feedback and performance coaching from an experienced professional.
- Positive change**
 You will be encouraged to apply and translate what you've learned to your own school context. Your training provider will give you models and examples that will help you translate theory into practical skills you can use in your setting.

Funding

Funding is available for teachers and leaders who work in the most challenging schools or educational settings. Scholarships will be available to teachers and leaders from:

Scholarships will continue to be available through Best Practice Network to all teachers and leaders from publicly funded schools and 16 to 19 educational organisations for the following:

- The 50% of schools with the highest proportion of students who attract pupil premium funding
- 16 to 19 educational settings identified as having high disadvantage
- NPQ for SENCOs
- NPQ for Headship
- EHCO (Early Headship Coaching Offer)

National Qualifications Locally Delivered

Thanks to our extensive NPQ Delivery Partner Network (see map), over 30,000 teachers and leaders have been able to engage with our NPQs in local schools and venues across England.

We draw from the local expertise of our partners to both develop and deliver the NPQs. This close relationship with local experts ensures we can deliver qualifications contextualised to local conditions.

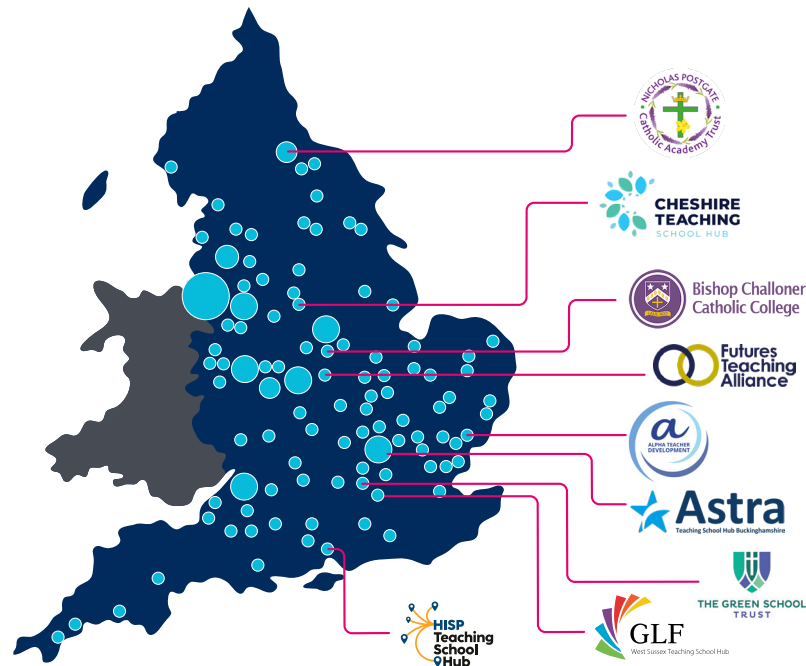
With almost 1,000 NPQ groups now running across England, your nearest NPQ group is just around the corner.



Chris Ludlow, Head of Partnerships.

Chris is responsible for managing our Delivery Partner Network and works closely with partners on all aspects of programme delivery.

If your school group would like to become an NPQ delivery partner please contact Chris at partnerships@bestpracticenet.co.uk



Partner focus



Sufian Sadiq
Director



CHILTERN
LEARNING
TRUST

As Director of Teaching School at Chiltern Learning Trust, Sufian oversees two regional Teaching School Hub areas.

A passionate activist within the educational landscape around equity and inclusion, Sufian is a Fellow and Board Member of the Chartered College of Teaching, as well as a Fellow for the Chartered Institute of Educational Assessors.

“The appetite for CPD is increasing and the way in which people ‘consume’ CPD has changed since the pandemic and it is great to work with Best Practice Network to make CPD accessible for all and to those school leaders that simply through no choice of their own cannot take time away from school.

CPD must become a contributor to wellbeing for teachers and not a trigger for creating stress and workload.”

“The NPQs delivered by BPN provide a strong framework for developing excellent schools and school leaders nationally.”



Karen Taylor-Paul
Director



“Since moving to Best Practice Network, our participants comment positively on the contextualised approaches to case studies and exemplars.

BPN listen to our feedback at weekly partnership meetings and at the strategic board; their pro-active approach to implementing change is one of the many positive aspects of our partnership.”



“Lots of information and great discussion with other people to aid my learning and review my own leadership.”

NPQSL Participant,
Spring 2022 Intake

National Professional Qualification for Senior Leadership (NPQSL)

Develop your leadership knowledge and expertise to improve outcomes for teachers and pupils in your school.

Who is it for?

NPQSL is for teachers and leaders who are, or want to be, senior leaders with cross-school responsibilities.

Entry requirements

Applicants must have

- QTS and/or QTLS and/or a Level 5 (or higher) qualification in any subject
- Either 2 full years experience of teaching following achieving QTS/QTLS or 2 full years experience in current role following completion of Level 5 (or equivalent)

Qualification elements

INDUCTION STAGE	Induction (incl. Initial needs analysis: 1 hour)	2 hours	Total Guided Learning Hours: 90
DEVELOPMENT STAGE	Face-to-face events	24 hours	
	Online course study	38 hours	
	Formative assessment tasks	20 hours	
	Leadership performance coaching	6 hours	
SUMMATIVE ASSESSMENT STAGE	Case study scenario	Max. 2500 words	

Learn more and apply at bestpracticenet.co.uk/NPQSL
For more information call 0117 920 9428 or email npq@bestpracticenet.co.uk

Benefits

- ✓ **Gain** the specialist expertise needed to tackle school improvement priorities
- ✓ **Support** the development of a positive, predictable and safe environment for pupils
- ✓ **Contribute** to your school's strategic direction and establish an environment for pupil success
- ✓ **Ensure** staff feel supported and valued
- ✓ **Attend** 4 Face-to-Face events and collaborate with peers



Scan here to learn more and apply.

AT A GLANCE



Face-to-face events
4



This Course Awards
60 Master's Credits



Course Duration
18 months



Coaching
6 hours



Course start
1 intake a year starting in spring



Andrew Harris
NPQ Online
Programme Lead

PROGRAMME LEAD

Transitioning from a military career to education I have learnt from two decades of teaching and organisational management the value and need of strong and interventional leadership. My passion can now be directed in leading the online NPQ programme development and delivery through our experienced workforce to challenge, support and strive for excellence through Best Practice Values.



“We are delighted with the NPQ programmes so far. I have two members of staff participating and the skills and knowledge they have gained so far is incredible.”
Headteacher

National Professional Qualification for SENCOs (NPQ for SENCOs)

Develop your leadership skills and expertise needed to navigate the evolving SEND landscape and champion inclusive practices.

Who is it for?

- Special Educational Needs Co-Ordinators (SENCOs)
- Teachers interested in developing expertise in special educational needs and disabilities (SEND) or undertaking a SENCO role in
- Senior leaders

Entry requirements

Applicants must have

- Either 2 full years experience of teaching following achieving QTS/QTLS or 2 full years experience in current role following completion of Level 5 (or equivalent)
- The opportunity to apply learning

Qualification elements

INDUCTION STAGE	Induction (incl. Initial needs analysis: 1 hour)	2 hours	Total Guided Learning Hours: 90
DEVELOPMENT STAGE	Face-to-face events	24 hours	
	Online course study	38 hours	
	Formative assessment tasks	20 hours	
	Leadership performance coaching	6 hours	
SUMMATIVE ASSESSMENT STAGE	Case study scenario	Max. 2500 words	

Benefits

- ✓ **Gain** the specialist expertise needed to tackle the intricacies of the SEND framework, legislation and best practices
- ✓ **Support** the development of a positive, predictable and safe environment for SEN pupils
- ✓ **Contribute** to your school's strategic direction and establish an environment for SEN pupil success
- ✓ **Build** strong partnerships with teachers, parents and external agencies
- ✓ **Ensure** seamless support for students with diverse needs
- ✓ **Attend** 4 Face-to-Face events and collaborate with peers



Scan here to learn more and apply.

AT A GLANCE

£ Full scholarships for all state-funded schools

🗣️ Face-to-Face events
4

🏆 This Course Awards
60 Master's Credits

🕒 Course Duration
18 months

📅 Coaching
6 hours

📅 Course start
1 intake a year starting in spring



Vanessa MacDonald
Leadership NPQ Lead
Facilitator

LEAD FACILIATOR

Vanessa has worked in education for 30 years and has been a primary headteacher. She is responsible for leading and overseeing the leadership NPQs programmes for Best Practice Network.



“Meeting people from lots of different locations and lots of different settings has been really valuable for my development and we get a real buzz from talking to each other.”

NPQH Participant,
Spring 2022 Intake

National Professional Qualification for Headship (NPQH)

NPQH allows participants to develop the knowledge that underpins expert school leadership and apply it to become an outstanding headteacher.

Who is it for?

For school leaders who are, or are aspiring to be, a headteacher or head of school with responsibility for leading a school.

Entry requirements

Applicants must have

- QTS and/or QTLS and/or a Level 5 (or higher) qualification in any subject
- Experience as a current headteacher, deputy headteacher, vice principal or equivalent role and about 18 months away from applying for Headship (if not already in post)

Qualification elements

INDUCTION STAGE	Induction (incl. Initial needs analysis: 1 hour)	2 hours	Total Guided Learning Hours: 104
DEVELOPMENT STAGE	Face-to-face events	30 hours	
	Online course study	38 hours	
	Formative assessment tasks	28 hours	
	Leadership performance coaching	6 hours	
SUMMATIVE ASSESSMENT STAGE	Case study scenario	Max. 2500 words	

Learn more and apply at bestpracticenetwork.co.uk/NPQH
For more information call **0117 920 9428** or email npq@bestpracticenetwork.co.uk

Benefits

- ✓ **Gain** school focussed leadership knowledge
- ✓ **Learn** what effective headteachers need to know
- ✓ **Lead** the strategic direction of your school
- ✓ **Support** the development of a positive, predictable and safe environment for pupils
- ✓ **Contribute** to your school's strategic direction and establish an environment for pupil success
- ✓ **Ensure** staff feel supported and valued
- ✓ **Attend** 5 Face-to-Face events and collaborate with other headteachers and aspiring headteachers



Scan here to learn more and apply.

AT A GLANCE



Full scholarships for all state-funded schools



Face-to-Face events
5



This Course Awards
100 Master's Credits



Course Duration
18 months

Coaching
6 hours



Course start
1 intake a year starting in spring



Catherine Sellars
Head Instructional Designer

HEAD INSTRUCTIONAL DESIGNER

As the Head Instructional Designer, Catherine is responsible for the creation of the online elements of the NPQs. Catherine has over 20 years' experience designing courses and CPD for teachers and other education professionals.



“The course has enabled me to link with leaders in a variety of organisations. These connections allow me to learn about potential next steps for my school (single academy trust).”

NPQEL Participant,
Spring 2022 Intake

National Professional Qualification for Executive Leadership (NPQEL)

Develop the expertise needed to lead change and improvement across a group of schools or multi-academy trust.

Who is it for?

This course is for school leaders who are, or want to be, an executive headteacher or other executive leader leading across more than one school.

Entry requirements

Applicants must have

- QTS and/or QTLS and/or a Level 5 (or higher) qualification in any subject
- Experience as a current serving headteacher (or equivalent role) with a minimum of 3 years' experience

Qualification elements

INDUCTION STAGE	Induction (incl. Initial needs analysis: 1 hour)	2 hours	Total Guided Learning Hours: 116
DEVELOPMENT STAGE	Face-to-face events	36 hours	
	Online course study	38 hours	
	Formative assessment tasks	34 hours	
	Leadership performance coaching	6 hours	
SUMMATIVE ASSESSMENT STAGE	Case study scenario	Max. 2500 words	

Benefits

- ✓ **Excel** as an executive leader
- ✓ **Join** 1:1 coaching sessions
- ✓ **Receive** advice from experts and tailored feedback on your performance
- ✓ **Build** your network of headteachers and executive leaders
- ✓ **Lead** the strategic direction of your school
- ✓ **Support** the development of a positive, predictable and safe environment for pupils
- ✓ **Contribute** to your school's strategic direction and establish an environment for pupil success
- ✓ **Ensure** staff feel supported and valued
- ✓ **Attend** 6 Face-to-Face events and grow your network of headteachers and executive leaders

AT A GLANCE



Face-to-face events
6



This Course Awards
100 Master's Credits



Course Duration
18 months



Coaching
6 hours



Course start
1 intake a year starting in spring



Simon Lockwood
Programme Lead for Executive Leadership

PROGRAMME LEAD

Simon has worked in Education for 40 years as a teacher, leader and local authority school improvement adviser and head of service.

His work is focused on teacher development and effective leadership development. He is an expert facilitator of adult and professional learning, with wide experience in delivering programmes from ITT to NPQH and NPQEL.



Scan here to learn more and apply.



“This is an invaluable opportunity that offers new headteachers access to support and allows them to build on their NPQH at a crucial time in their new headship journey.”

EHCO Participant

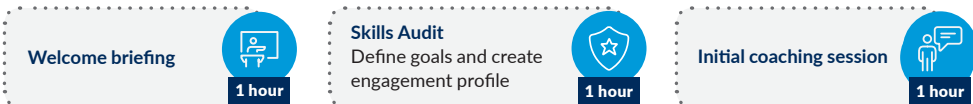
Early Headship Coaching Offer (EHCO)

This targeted one-year support package has been tailored to the needs of new headteachers.

It provides structured, unassessed support based on the best available evidence about what makes an effective headteacher. The EHCO can be completed alongside the National Professional Qualification for Headship (NPQH) and is also suitable for NPQH graduates.

Induction

These 3 sessions are compulsory



Early Headship Coaching Offer Menu



Reflection and feedback



Learn more and apply at bestpracticenet.co.uk/EHCO
For more information call 0117 920 9428 or email npq@bestpracticenet.co.uk

Who is it for?

You're eligible for this support if you meet the following criteria:

- Are in your first 5 years of headship at a state-funded school or state-funded organisation that offers 16 to 19 places in England
- Are taking or have completed the NPQH

Benefits

- ✓ **Regular** meetings with a great leadership coach
- ✓ **Time** to reflect on challenges in coaching calls
- ✓ **Discover** solutions and next steps through careful questioning from the coach
- ✓ **Access** to evidence-based research
- ✓ **Be empowered** to make decisions based on proven research
- ✓ **Network** with other headteachers
- ✓ **Share** your headship journey with peers
- ✓ **Talk** through systems and processes used in different schools



Scan here to learn more and apply.

AT A GLANCE



Full scholarships for all state-funded schools



1:1 Coaching and expert-led conversations
9 hours



Course Duration
12 months



Course start
1 intake a year starting in spring



Alis Rocca
Lead Facilitator, Early Headship Coaching Offer

LEAD FACILITATOR

Alis has been a Headteacher, is a leadership performance coach, and is an education consultant and presenter, working with schools to develop empowered leaders for individual and organisational success. Alis has a Masters Degree in Leadership from Cambridge University.

“EHCO empowers you to lead in the way that you know aligns with your own values and principles, within your own unique school context.”

Apply for an NPQ

You can apply for any of our NPQs directly through our website, but we suggest you take the following steps before applying:

STEP 1

Speak to your headteacher or line manager about getting support to complete a National Professional Qualification (NPQ).

STEP 2

Visit bestpracticenet.co.uk/NPQ

We have in-depth programme guides, case studies and webinar recordings which will give you a good understanding of the requirements of each NPQ.

STEP 3

Talk to us! We can be contacted through the **livechat** on our website or by **phone** or **email** and we will be delighted to answer any questions you might have.

STEP 4

Apply directly through our website. Applications take approximately **20 minutes** to complete and our NPQ team is on-hand and **ready to assist**.



Learn more

0117 920 9428

npq@bestpracticenet.co.uk

bestpracticenet.co.uk/npq

